



SOLRISEN
BEST OR NOTHING

PARTS CATALOG

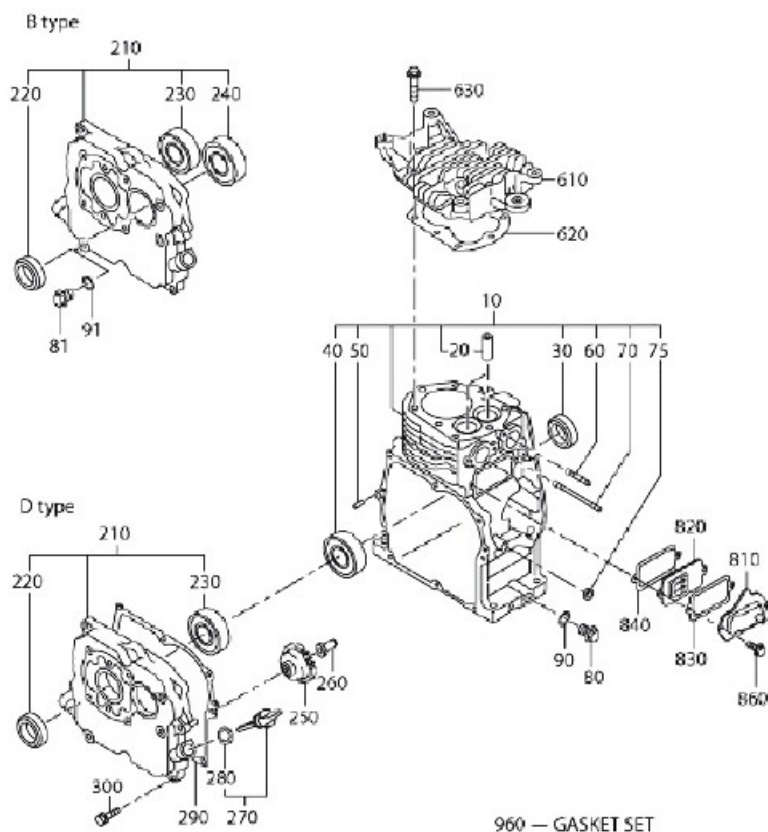
EY28



SOLRISEN
BEST OR NOTHING

1 CRANKCASE

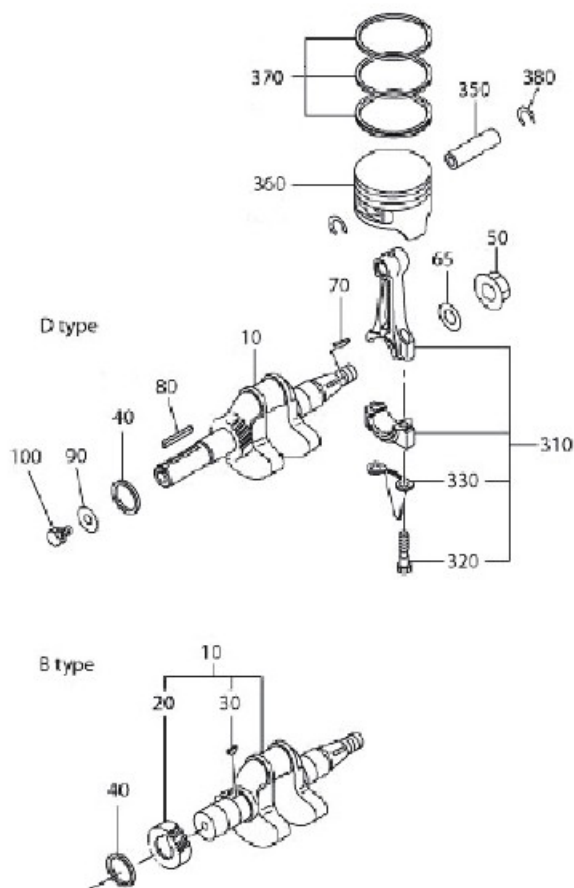
FIG. 100



EY28

REF. NO.	PART NUMBER	PART NAME	QTY	RAMARKS	FIG. NO.
10	234-10131-H1	CRANKCASE CP	1		100
30	X44-03000-30	OIL SEAL	1	30D×45D×8B	100
40	X60-03000-20	BALL BEARING	1	30D×62D×16B	100
50	X31-00600-50	DOWEL PIN	2	6D×14.8L	100
75	X44-00800-10	OIL SEAL	1		100
80	040-11400-30	PLUG	2	M14×1.25×12L	100
81	040-11000-11	PLUG	1		100
90	021-11400-20	GASKET	2		100
91	003-71100-00	GASKET(FIBER)	1		100
210	234-10901-J3	MAIN BEARING COVER CP	1	B-METRIC	100
210	234-11001-03	MAIN BEARING COVER CP	1	D-METRIC	100
210	234-12001-03	MAIN BEARING COVER CP	1	D-IMPERIAL	100
220	X44-03000-30	OIL SEAL	1	30D×45D×8B	100
230	X60-03000-20	BALL BEARING	1	30D×62D×16B	100
240	X60-02800-10	BALL BEARING	1	B	100
250	234-45001-03	GOVERNOR GEAR CP	1		100
270	269-63601-H3	OIL GAUGE	2		100
280	X21-31600-30	GASKET	2	16D×23D×1.2T	100
290	234-16001-03	GASKET(BEARING COVER)	1	T=0.3	100
300	X11-00802-50	BOLT&WASHER AY	8		100
610	234-13001-J3	CYLINDER HEAD	1		100
620	234-15001-H1	GASKET CP(HEAD)	1		100
630	X11-00804-40	FLANGE BOLT	8	M8×1.25×40L	100
810	234-14301-H1	TAPPET COVER UN	1		100
820	234-14404-H1	BREATHER PLATE CP	1		100
830	234-16006-13	GASKET(TAPPET COVER)	1	T=0.8	100
840	234-16007-23	GASKET(BREATHER PL)	1	T=1.5	100
860	20F-00600-21	FLANGE BOLT	2	M6×1.0×12L	100
960	234-99001-07	GASKET SET	1		100
INCL: FIG100-280,290,620,830,840, FIG300-340,550, 560					

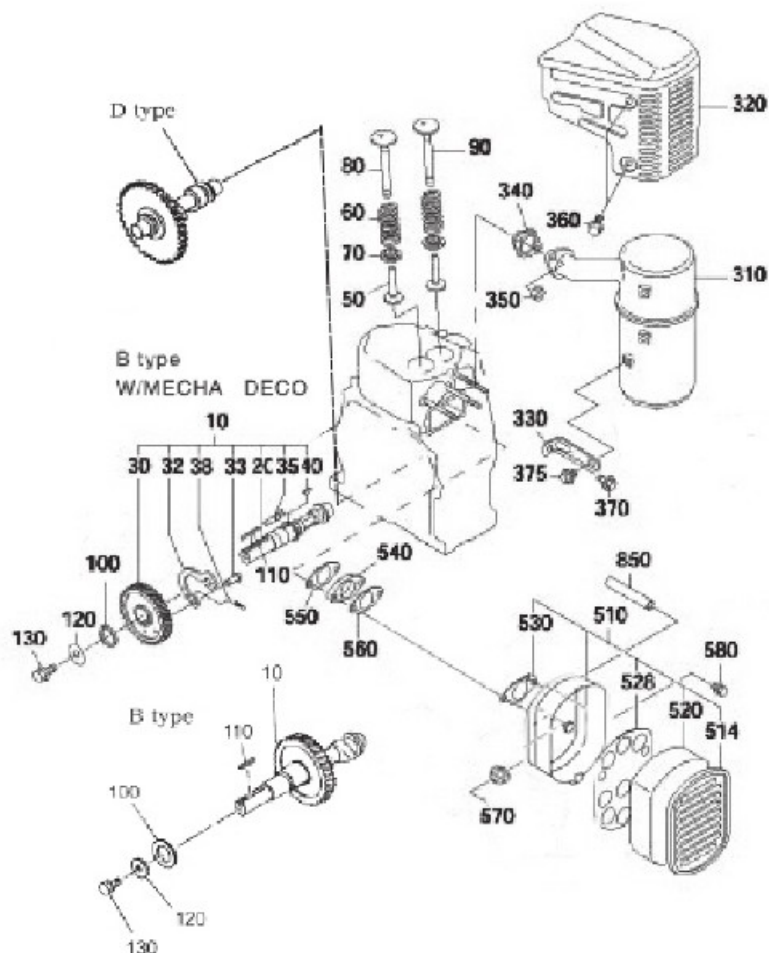
FIG. 200



EY28

REF. NO.	PART NUMBER	PART NAME	QTY	RAMARKS	FIG. NO.
10	234-20101-H3	CRANKSHAFT CP	1	B-METRIC/STD	200
10	234-20201-H3	CRANKSHAFT CP	1	D-METRIC/STD	200
10	234-20901-H3	CRANKSHAFT CP	1	DU	200
10	234-21201-H3	CRANKSHAFT CP	1	DH	200
10	234-20701-H3	CRANKSHAFT CP	1	GEN	200
10	234-20301-H3	CRANKSHAFT CP	1	PUMP	200
40	023-03001-80	SPACER T=0.8	1	D	200
40	023-02800-20	SPACER T=0.8	1	B	200
50	X18-01800-20	FLANGE NUT	1		200
60	X20-01900-10	WASHER	1		200
70	032-30300-10	WOODRUFF KEY	1	3×6(D16)	200
80	005-30073-51	KEY	1	D	200
90	X20-00800-20	WASHER	1	D	200
100	X13-00802-50	BOLT&WASHER AY	1	D	200
310	234-22551-00	CONNECTING ROD AY	1		200
350	234-23301-H3	PISTON PIN	1	D=16	200
360	234-23401-H3	PISTON	1		200
360	234-23402-03	PISTON	1	O/S 0.25	200
360	234-23403-03	PISTON	1	O/S 0.5	200
370	234-23501-H7	PISTON RING SET	1	STD	200
370	234-23502-07	PISTON RING SET	1	O/S 0.25	200
370	234-23503-07	PISTON RING SET	1	O/S 0.5	200
380	056-51600-10	CLIP	2	15.7D1×1.4D2	200

FIG. 300

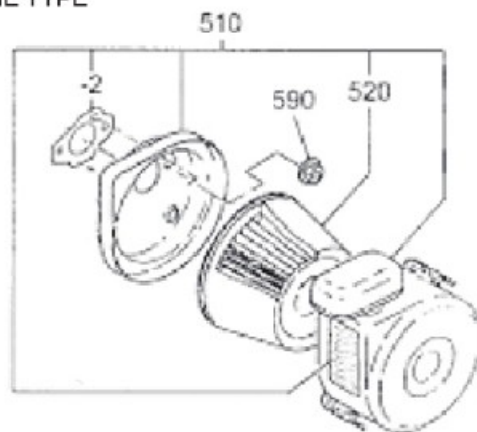


EY28

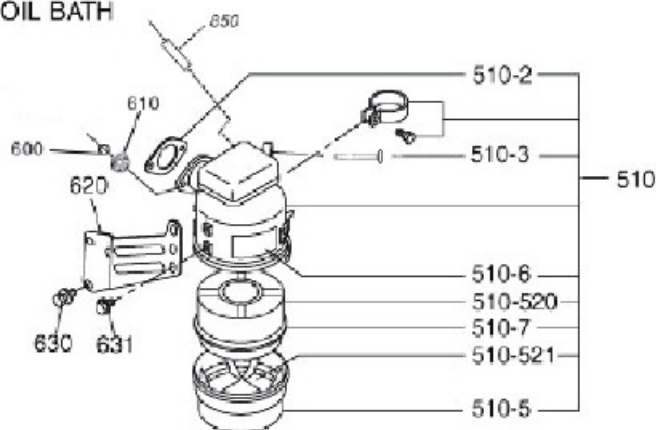
REF. NO.	PART NUMBER	PART NAME	QTY	RAMARKS	FIG. NO.
10	234-31701-H3	CAMSHAFT CP	1	D	300
10	234-31601-H3	CAMSHAFT CP	1	B	300
10	234-32401-03	CAMSHAFT CP	1	B/DECO	300
32	254-30001-03	FLY WEIGHT	1	B/DECO	300
33	227-30501-03	PIVOT	1	B/DECO	300
35	234-30201-11	RELEASE PIN CP	1	B/DECO	300
38	234-38750-03	RETURE SPRING	1	B/DECO	300
50	234-33301-H3	TAPPET	2		300
60	227-33601-H3	VALVE SPRING	2	D=2.3	300
70	234-33711-H3	SPRING RETAINER	2	T=2.0	300
80	234-33421-H3	INTAKE VALVE	1		300
90	234-33521-H3	EXHAUST VALVE	1		300
100	023-03001-80	SPACER T=0.8	1	B	300
110	005-30073-51	KEY	1	B	300
120	X20-00800-20	WASHER	1	B	300
130	X13-00802-50	BOLT&WASHER AY	1	B	300
310	234-30101-H1	MUFFLER CP	1		300
310	234-30210-01	MUFFLER CP	1	OIL BATH	300
320	234-34201-H1	MUFFLER COVER CP	1		300
330	234-35301-H1	MUFFLER BRACKET	1		300
330	234-35302-01	MUFFLER BRACKET	1	OIL BATH	300
340	234-35201-H1	GASKET CP (EXHAUST)	1		300
350	X17-00800-30	NUT	2		300
360	20F-00600-10	FLANGE BOLT	4	M6×1.0×8	300
370	20F-00600-21	FLANGE BOLT	1	M6×1.0×12	300
375	20F-00600-10	FLANGE BOLT	1	M6×1.0×8	300
510	234-32652-H0	AIR CLEANER AY	1	CYCLONE	300
510	234-32601-H0	AIR CLEANER AY	1	PUMP	300

FIG. 310

CYCLONE TYPE



OIL BATH

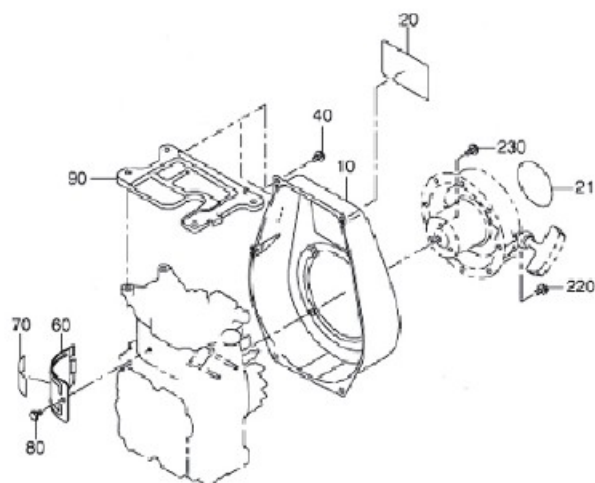


EY28

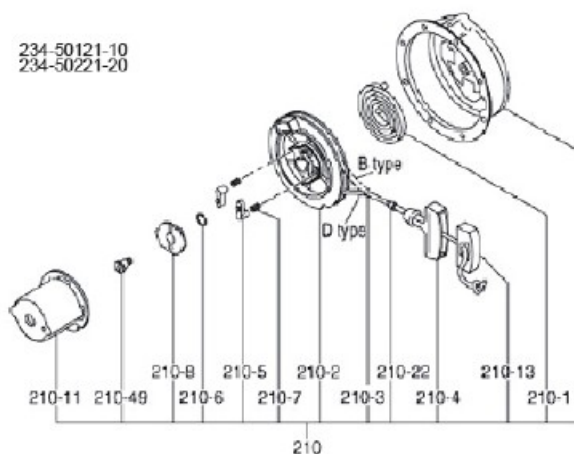
REF. NO.	PART NUMBER	PART NAME	QTY	RAMARKS	FIG. NO.
510	234-32618-H0	AIR CLEANER AY	1	OIL BATH	310
-2	227-36003-13	GASKET	1	OIL BATH	310
	227-36003-13	GASKET	1	CYCLONE	310
-3	234-46101-H8	KNOB CP	1	OIL BATH	310
-5	234-32713-H8-01	OIL PAN CP	1	OIL BATH	310
-6	234-96102-H3	LABEL	1	OIL BATH	310
-7	234-32720-H8	PACKIN	1	OIL BATH	310
520	234-32683-H8	ELEMENT SET	1	CYCLONE	310
520	234-32604-H8	ELEMENT SET	1	OIL BATH	310
521	234-32612-H8	ELEMENT	1	OIL BATH	310
530	227-36003-13	GASKET	1	PUMP	300
540	234-32901-H3	INSULATOR	1		300
550	234-35202-13	GASKET1(INSULATOR)	1		300
560	234-35902-03	GASKET2(INSULATOR)	1		300
570	20F-38060-00	FLANG NUT	2	PUMP	300
580	20F-39212-H0	FLANGE BOLT	1	PUMP	300
590	226-39212-H0	NUT&WASHER AY	2	CYCLONE	310
600	003-32006-00	SPRING WASHER	2	OIL BATH	310
610	X17-00601-30	NUT	2	OIL BATH	310
620	234-36101-H1	BRACKET	1	OIL BATH	310
630	X13-00802-60	BOLT&WASHER AY	2	OIL BATH	310
631	20F-00600-10	FLANGE BOLT	2	OIL BATH	310
850	085-10803-50	RUBBER PIPE	1	8D×11D×75L	300
850	085-10800-70	RUBBER PIPE	1	OIL BATH	310

REF. NO.	PART NUMBER	PART NAME	QTY	RAMARKS	FIG. NO.
10	234-42301-J1	GOVERNOR LEVER CP	1		400
20	234-42201-H3	GOVERNOR SHAFT	1		400
26	20F-11080-00	WASHER	1		400
30	234-42701-H3	GOVERNOR ROD	1		400
40	234-42801-H3	ROD SPRING	1		400
50	003-13060-00	CLIP	2		400
60	X13-00603-20	BOLT&WASHER AY	1		400
70	018-60600-20	NUT	1	M6	400
80	234-42501-13	GOVERNOR SPRING	1	UPPER	400
80	234-42503-H3	GOVERNOR SPRING	1	LOWER	400
200	234-43308-11	SPEED CONTROL CP	1	LOWER	400
210	X11-60400-10	BOLT	1	LOWER	400
230	004-31053-00	SCREW	1	LOWER	400
240	X17-00500-40	NUT	1	LOWER	400
260	X14-00400-20	SCREW	1	LOWER	400
265	205-46003-23	CONT SPRING	1	LOWER	400
280	226-43101-H1	LINK PIVOT	1	LOWER	400
290	234-44201-H1	WIRE BRACKET CP	1	LOWER	400
293	20F-00600-21	FLANGE BOLT	1	LOWER	400
310	234-43306-01	SPEED CONTROL CP	1	UPPER	400
340	227-43501-H1	STOP PLATE	1	UPPER	400
350	227-45002-03	SPRING WASHER	1	UPPER	400
360	X14-00602-00	SCREW	1	UPPER	400
370	20F-27060-00	NUT	1	UPPER	400
380	X11-00600-50	FLANGE BOLT	1	UPPER	400
410	234-44202-13	WIRE BRACKET CP	1	UPPER	400
450	20F-27060-00	NUT	1	UPPER	400

FIG. 500



234-50121-10
234-50221-20

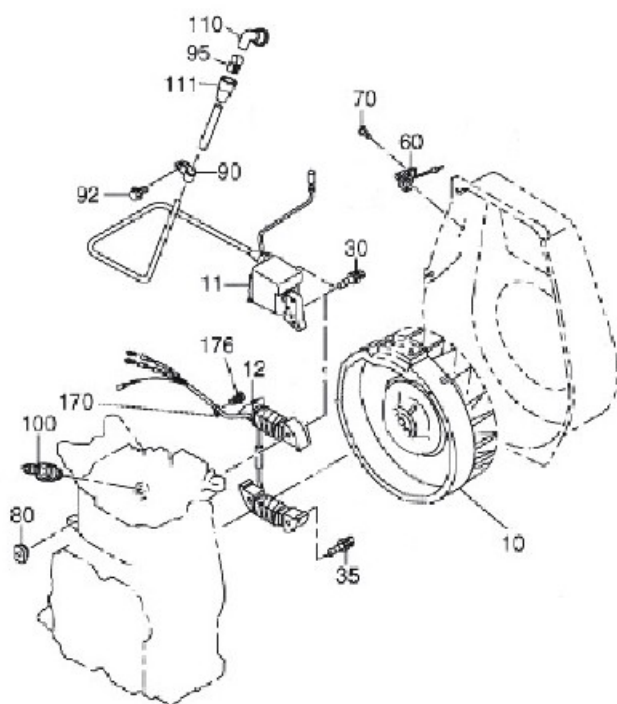


EY28

REF. NO.	PART NUMBER	PART NAME	QTY	RAMARKS	FIG. NO.
10	234-51163-H1	BLOWER HOUSING CP	1	B/Y	500
10	234-51220-J1	BLOWER HOUSING CP	1	D/Y	500
10	234-51191-H1	BLOWER HOUSING CP	1	B/R/OIL BATH	500
20	234-95101-H3	LABEL(TRADE MARK)	1		500
40	20F-00600-21	FLANGE BOLT	5	M6×1.0×12L	500
60	234-52601-J3	CYLINDER BAFFLE	1		500
70	234-91870-J3	LABEL(ENGINE NAME)	1	B	500
70	234-91869-J3	LABEL(ENGINE NAME)	1	D	500
70	234-91870-K3	LABEL(ENGINE NAME)	1	OIL BATH	500
80	20F-00600-21	FLANGE BOLT	1	M6×1.0×12L	500
90	234-52701-J3	HEAD COVER CP	1		500
210	234-50121-10	RECOIL STARTER AY	1	B	500
210	234-50221-20	RECOIL STARTER AY	1	D	500
-1	215-50515-08	SPIRAL SPRING	1		500
-2	234-50120-18	REEL	1		500
-3	234-50183-08	STARTER ROPE	1		500
-4	227-50100-08	STARTER KNOB	1		500
-5	161-50125-08	RATCHET	2		500
-6	227-50131-08	FRICTION SPRING	1		500
-7	227-50135-08	RETURN SPRING	2		500
-8	252-50150-08	RATCHET GUIDE	1	B	500
-8	161-50150-08	RATCHET GUIDE	1	D	500
-11	234-50146-18	STARTER PULLEY	1		500
-49	227-50152-08	SET SCREW	1		500
-13	227-50150-08	KNOB CP	1		500
220	20F-00600-10	FLANGE BOLT	4	M6×1.0×8L	500
230	20F-00600-30	FLANGE BOLT	1	M6×1.0×18L	500

REF. NO.	PART NUMBER	PART NAME	QTY	REMARKS	FIG. NO.
10	234-60110-L1	FUEL TANK CP	1	Y	600
10	234-60507-J1	FUEL TANK CP	1	R/OIL BATH	600
20	X73-20044-50	LABEL(CAUTION)	1		600
30	X43-04300-10	FUEL TANK CAP CP	1	42.5D×68D×14H	600
30	043-04300-60	FUEL TANK CAP CP	1	OIL BATH	600
40	X64-13600-10	FUEL FILTER	1		600
45	064-80004-00	LEVEL GAUGE CP	1	OIL BATH	600
46	014-50500-60	SCREW	2	OIL BATH	600
50	X64-20118-00	FUEL STRAINER AY	1		600
-1	064-20064-20	FILTER	1		600
-2	064-20064-10	PACKING	1		600
-3	064-20042-10	CUP, STRAINER	1		600
-4	064-20064-30	NUT	1		600
-5	064-20064-40	PACKING	1		600
50	X64-20078-01	FUEL STRAINER AY	1	OIL BATH	600
60	20F-38080-00	FLANGE NUT	4		600
70	234-62601-H1	FUEL PIPE CP	1		600
80	085-10601-70	RUBBER PIPE	1	8D×12D×64L	600
90	056-11100-20	HOSE CLAMP	2	11D	600
210	234-62481-J0	CARBURETOR AY	1	PUMP/NIKKI	600
210	234-62301-H0	CARBURETOR AY	1	CYCLONE/MIKUNI	600
210	234-62367-H0	CARBURETOR AY	1	OIL BATH	600

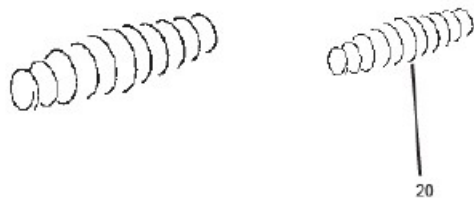
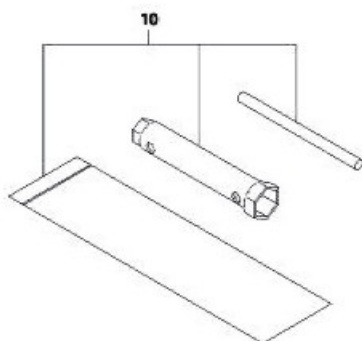
FIG. 700



EY28

REF. NO.	PART NUMBER	PART NAME	QTY	REMARKS	FIG. NO.
10	234-70101-H1	FLYWHEEL CP	1	B	700
10	234-70201-11	FLYWHEEL CP	1	D	700
10	234-70141-01	FLYWHEEL CP	1	OIL BATH	700
11	234-70161-K1	IGNITION COIL CP	1	B	700
11	FCR-03200-04	IGNITION&CAP	1	D	700
11	FCR-03200-06	IGNITION&CAP	1	OIL BATH	700
12	234-70166-01	LAMP COIL	1	OIL BATH	700
30	X13-00603-20	BOLT AND WASHER AY	2	M6×1.0×30L	700
35	X13-00603-20	BOLT AND WASHER AY	2	OIL BATH	700
60	X66-00004-71	SWITCH AY	1		700
70	20F-00400-90	TAPPING SCREW	2	ST4.0×10L	700
80	226-75501-H3	GROMMET	1		700
90	206-75501-J1	CLAMP CP	1		700
100	X65-01430-41	SPARK PLUG	1	E6TC	700
100	X65-01430-31	SPARK PLUG	1	E4TC/OIL BATH	700
110	X65-50003-40	SPARK PULG CAP	1	B	700
170	207-75001-H1	CLAMP CP	1	OIL BATH	700
176	015-20600-50	TAPPING BOLT	1	OIL BATH	700

FIG. 900



EY28



REF. NO.	PART NUMBER	PART NAME	QTY	REMARKS	FIG. NO.
10	226-90304-H0	ACCESSORY TOOL KIT	1		900
20	X83-00000-10	COIL SPRING	1	LOWER CONTROL	900
20	234-46002-13	RETURN SPRING	1	UPPER CONTROL	900